

NoDec® 900



NoDec 900 battery-powered Dynamic Seat Cushion

Once again, Rober's reputation for innovative product development is demonstrated with the launch of our NoDec 900 battery-powered Dynamic Seat Cushion.

The NoDec 900 provides maximum comfort using a fully dynamic cushion along with stability giving the user reassurance whilst in use. The NoDec 900 will run independently on the battery or can be used whilst connected to the mains in conjunction with the charging cycle. The system provides a minimum 17hrs of run time.*

The seat cushion is made from specially-developed PU film which has been used in the manufacture of all our cells and has passed all the automotive and medical devices specification requirements.

The external cover is a PU breathable two way stretch fabric and totally waterproof, making it suitable for outside applications.

*The system will run for a minimum of 17hrs, though this can change pending configuration.

 **MADE IN BRITAIN**

ROBER

NoDec® 900



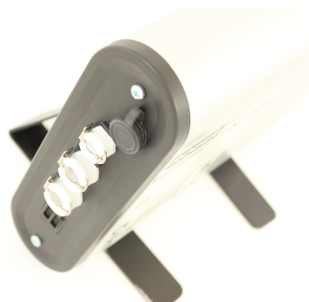
NoDec 900 casing

The aluminium casework has been designed with simple graphics for an easy-to-read screen which sits at the top of the unit. This provides the user with information on battery life and pump cycle as well as access to the power button. The sturdy aluminium case combines excellent shock resistance with the high level finish expected from Rober.

The system comes supplied with a neoprene cover to protect it from the elements when used outside which can be left in place when used inside.

The pump case comes with a unique bracket system which allows a variety of different fastening options to suit the many securing methods required for a product of this nature.

To register your interest please visit:
www.pegasushealthcare.com.au



Pegasus Healthcare

437 Nepean Highway, Brighton
East, Victoria 3187

t +61 (3) 9596 6377

f +61 (3) 9596 6343

e info@pegasushealthcare.com.au



MADE IN BRITAIN

